

CERTIFICATE OF LOCATION OF GOVERNMENT CORNER

NORTH QUARTER Corner of Section 16, Township 105 N, Range 41 W, 5th P.M.

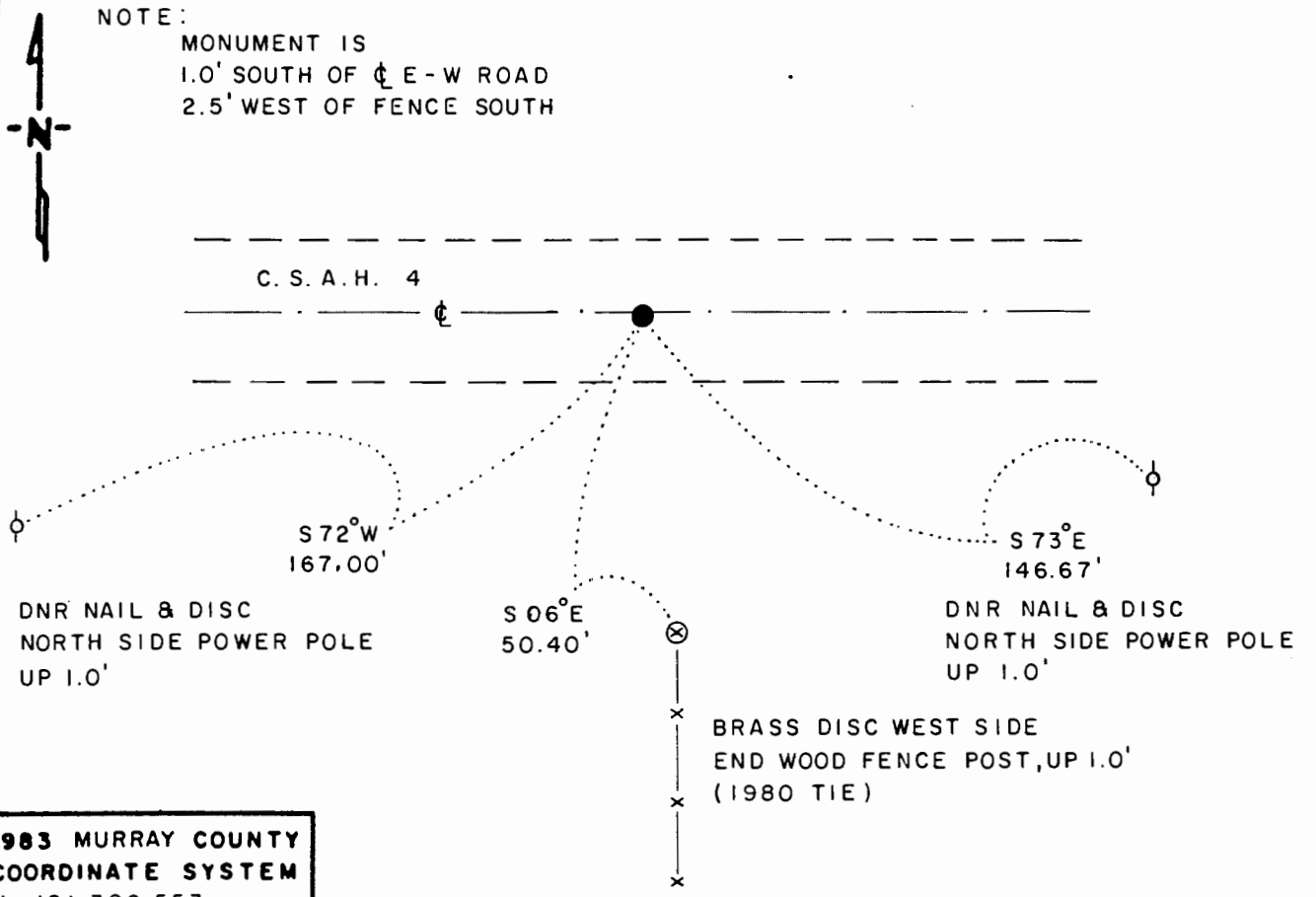
STATE OF MINNESOTA, County of MURRAY

At the corner location shown on the sketch

- On 3-21-90 found a 1/2" x 20" IRON ROD WITH PLASTIC RLS CAP # 12967,
OVER 6" x 8" STONE, DOWN 27"
- left monument as found, lowered monument, removed monument (explain)
- On 3-21-90 placed a 3/4" x 24" REBAR WITH ALUMINUM CAP STAMPED
"DNR SURVEY MARKER", OVER STONE, DOWN 0.2'

SKETCH OF REFERENCE TIES

NOTE:
 MONUMENT IS
 1.0' SOUTH OF $\text{\textcircled{C}}$ E-W ROAD
 2.5' WEST OF FENCE SOUTH



1983 MURRAY COUNTY
 COORDINATE SYSTEM
 N = 121,306.553
 E = 498,067.820

BEARINGS OBSERVED WITH COMPASS

Statement of evidence relative to this corner location is on back of page

J.B.M. 4-25-90
WMA 1488

I hereby certify that this document and the data contained herein was prepared by me or under my direct supervision.

Lowell R. Pommeroy 5-10-90
SIGNATURE DATE

Registration No. 17005

Land Surveyor, Professional Engineer
 County Surveyor, County Engineer

OFFICE OF THE COUNTY RECORDER
County of _____

I hereby certify that this document was filed in the Co. Recorders office at _____ M. on the _____ day of MAY 16 1990 A.D., 19 _____

County Recorder James V. Johnson

By _____, Deputy

DOCUMENT NO. _____

North Quarter Corner of Section 16, Township 105 North, Range 41 West

The DNR Bureau of Engineering contacted the following for survey information:

Secretary of State's Office
Murray County Recorder's Office
Murray County Highway Engineer's Office
Bell Surveying, Inc., of Worthington
Madsen Land Surveying of Fairmont

- 1861 U.S. General Land Office notes obtained from the Secretary of State's Office show corner marked with a post in a mound with trench and pits as per instructions.
- 1898 Surveyor's Record Book A, page 76, obtained from the County Recorder's Office contains a survey by J. W. Woolstencroft. Survey shows a 6" by 8" by 18" stone at corner but does not indicate if found or set.
- No Date Surveyor's Record Book obtained from the County Highway Engineer's Office shows a 2" by 2" hub at corner but does not indicate if found or set. The following ties are shown to corner:
nail and bottle cap in fence post, southeast, 56.8 feet
nail and bottle cap in corner fence post, south, 50.4 feet
- 1949 Construction Plan Sheet Number 3 of 19 for State Aid Road 10, now County State Aide Highway 4, obtained from the County Highway Engineer's Office shows a monument at corner but does not give a description of it. The corner is shown:
at Station 26+46.0
2641.1 feet from the northeast corner of Section 16
2646.0 feet from the northeast corner of Section 17
- 1980 A Certificate of Survey and field notes obtained from Madsen Land Surveying, surveyed by Gary Martin, RLS #12967, show that a 1/2 inch rebar was set over a stone at corner per county recorders. The following ties are shown to corner:
2643.15 feet from the northeast corner of Section 16
2643.36 feet from the northeast corner of Section 17
1.0 feet south of the centerline of an east-west road
3.0 feet west of the northerly extension of a fence south
brass tag in corner fence post, south, 50.37 feet
brass tag in fence post, southwest, 63.54 feet
- 1990 March, DNR Bureau of Engineering found a 1/2 inch diameter by 20 inch long rebar with a plastic cap stamped RLS #12967 at corner. Removed the rebar and found a 6" by 8" stone down 27 inches. Discarded the found rebar and set a DNR Survey Marker over the stone. Searched for and found record ties as shown on sketch of reference ties. The stone was found to be:
1.0 feet south of the center line of an east-west road
2.5 feet west of a fence south
2643.25 feet from the northeast corner of Section 16
2642.91 feet from the northeast corner of Section 17

Analysis of the above information led the DNR Bureau of Engineering to conclude that the found stone marks the location of the corner.